

# Regenerating North Solihull

November 2007

Your News, Your North Solihull



## ➤ What's in this newsletter...

PAGE 2	PAGE 3	PAGE 4 & 5	PAGE 6 & 7	PAGE 7 & 8	PAGE 10	PAGE 11 & 12
<p><b>Confused about how you can have your say?</b></p>	<p><b>Talking to you about regeneration</b></p> <hr/> <p><b>Important information about Bosworth Wood Primary School</b></p>	<p><b>North Solihull Cycle Ride</b></p>	<p><b>Kingshurst &amp; Fordbridge</b></p> <p>↓</p> <p><b>Kids get hands on with regeneration</b></p> <hr/> <p><b>Oak &amp; Shires at Yorkwood Nature Reserve</b></p>	<p><b>Smith's Wood &amp; Chelmsley Wood</b></p> <p>↓</p> <p><b>Our tribute to Andy Whitlock</b></p> <hr/> <p><b>Kingfisher School takes flight</b></p>	<p><b>Schools Programme Update</b></p>	<p><b>Who do you talk to?</b></p> <hr/> <p><b>Talent Search update</b></p>

# Confused about how you can have your say?

## Strategic Framework

The Strategic Framework is an overall plan setting out what could be done across North Solihull over the next 15 years. It acts as a guide to all the developments and changes happening as part of the regeneration of your area.



## Area Plans

The first steps to turning the proposals in the Strategic Framework into something that will, in reality, work are the Area Plans.

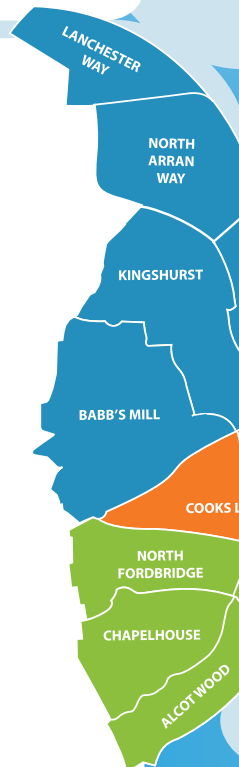
For these plans North Solihull has been spilt into three main areas;

North  
Central  
South

When we are consulting in your area, we will send you a letter or a flyer inviting you to come and see our draft ideas for what could change in your area. These draft ideas and plans show where new roads might go, where new housing sites could be built, and where we could improve green space, shops and facilities. They will also show you where we plan to build Village Centres and the new primary schools for your area.

It's important that we look at the bigger picture before we go into more detailed planning. So there won't be lots of details at this stage because we want to hear your views on the broad ideas to see if they are right before we do more work on the details.

Your ideas will help shape the next stage of our plans, and we always make sure you're updated on how we're getting on by writing to you and putting updates in this newsletter.



## Neighbourhood Plans

Once we have developed an Area Plan, we will then look at developing the individual Neighbourhood Plans, these go into detail about what changes will happen.

It takes around 12 months to develop a Neighbourhood Plan from initial consultations to final approval by the Partnership Board and Councillors from Solihull Council.

You will be invited to consultation events at every stage of the Neighbourhood Planning process. We have already completed this in three neighbourhoods; Craig Croft, North Arran Way and Kingshurst & Babbs Mill.

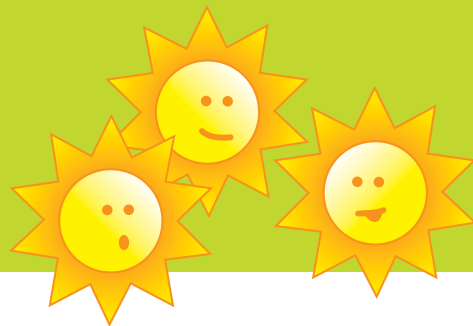
The most important thing to remember is that, if you do need to move home as part of our regeneration plans, we will visit you individually in your home and explain everything to you, including the financial help we can offer you.



## To sum it up

Every time we create new plans, if they relate to where you live, we will always invite you to come and see them and have your say.

# Talking to you about regeneration



In June we consulted residents on proposals for the North Area. This covered ideas for improving green spaces, Village Centres, new primary schools, areas for new housing and proposals for improving how people get around the area.

## So what did people tell us? Here are some of your comments:

### On New Housing:

- “Depends on how it is done”
- “OK so long as not all green spaces are built on”
- “Yes if it generates income to do the work”
- “More bungalows for the elderly”
- “As long as money goes back into the area”

### On green space:

- “Play areas for older children are needed”
- “So long as they are well maintained”
- “So long as the play areas are safe for young children”

These comments have helped shape a Draft North Area Plan. Residents in the North Area were invited to a number of consultation sessions between 15 - 26 October to give their views on the draft plan. They also gave their views on some detailed proposals for a number of housing sites, which were identified as part of the initial consultation.



## Important Information about Bosworth Wood Primary School

Bosworth Wood Primary School has very large playing fields and they rarely use parts that are furthest away from the school towards Alvis Walk.

We want to improve the space the pupils use so the children at the school will be able to use much better facilities than they have now. There is also the potential for working with the Governors regarding community use of facilities.

We want to use this remaining space and we'd like to hear your suggestions. Whatever we use the space for, the school playing fields will still

remain larger than the nationally recommended size for school playing fields.

We want to hear your suggestions. Please contact us:

**Mr A. George**  
**North Solihull Partnership Project Office**  
**Kingfisher School**  
**Kingfisher Drive**  
**Birmingham**  
**B36 0SZ**

You may also like to use our free phone number **0800 389 7997**, or you can contact us by e-mail on **regeneration@solihull.gov.uk**



# North Solihull Cycle Ride

As you can see, we had a lot of fun at the first North Solihull Cycle Ride on Saturday 1st September. From toddlers, to teenagers to families, lots turned up to have a go at our 10-mile route.

There were signs to direct people around the course and to show our current and future regeneration plans. So, it was a great chance for people to actually see what, where, and how things will change.

The atmosphere around the route was brilliant. Everyone who took part was very enthusiastic, and there were a number of people who weren't able to take part this time who are keen for us to run it again. So watch this space, this could be the start of the annual North Solihull Cycle Ride – well the great North Run had to start somewhere didn't it!

Congratulations to everyone who took part. If you took part and gave us your address you will soon get a certificate in the post.



**“The cycle ride was a great way to see more of the area”**

# On yer

## A big thank you goes out to our sponsors

### **SAINSBURY'S**

for donating money towards the refreshments.

**Twycross Zoo** for donating a free family pass. All the registration forms were put into a hat, and the winner is.....Leonard O'Mahoney. Well done! We'll be sending you your free pass in the post.

**Cycle Solihull** for designing the route.



**Red Kite Cycles** in Shirley for running a free cycle surgery on the day to check everyone's bikes and offer advice.

**Midland Cycle Hire** for giving a discounted rate for the day.



Joshua, Rebecca and Kim Bromage

"I had no idea North Solihull was so easy to get around by bike"



Vicky and Paul Johnson

# Bike!

"We loved it! Will there be one next year?"



Stuart and Nigel Busby with John and Alice Wilson

# Kingshurst & Fordbridge

## Kids Get Hands On With Regeneration

We've put up some colourful signage outside Kingshurst School, for parents, children and other passers by to see. We're really proud of the new primary school we are building and wanted to show off a bit!

But there's no point building a new school without getting the children involved. So when we started our designs for the signage, we spoke to the Head Teachers at Kingshurst Junior and Infant Schools, and asked them if the children would like to have their handprints included in the design. They said yes! So take a look at the finished result.



# Oak and Shires, Yorkswood Local Nature Reserve 11am-3pm, Saturday 24th November

Come down to Yorkswood Nature Reserve and learn more about trees, traditional crafts such as woodturning, basket making and logging. We will be giving away free recycled note pads and there will be a Shire horse on hand to help with woodland management, so come along!

The event is held in honour of National Tree Week (21 Nov - 02 Dec 2007), to find out more about the week go to:

**[www.treecouncil.org.uk](http://www.treecouncil.org.uk)**



# Smith's Wood & Chelmsley Wood

## Our tribute to Andy Whitlock

We are honouring Andy Whitlock, who tragically died from a heart condition, aged just 39.

Sadly, Andy died in the summer of 2005 leaving behind his young family including his wife, Leanne Hunt, and an unborn son who is now a healthy toddler. Andy was a friend of ours and his death was a loss not only to his family, but to the whole community.

His enthusiasm and hard work played a crucial role in shaping the future of the regeneration project. He even visited a relative's Bellway home in Ipswich to see the standard of housing developments that were proposed.

Given this, we thought that a fitting tribute would be to name a housing development, Whitlock Way, in his memory. The new development is in Chelmsley Wood off Carisbrooke Avenue and work is planned to start in 2008.

Andy's widow Leanne said that he would have been amazed at the decision to name a housing development after him. She told us, "Never in a million years would Andy have ever expected to be honoured like this. He was a great believer in doing what you could for the community and he would be extremely proud if he knew how he was being remembered.

"Andy was a real salesman and could sell snow to the Eskimos. He used these skills to make sure the community was properly represented when the idea of the regeneration project first came about. It's such a shame he's not here today to see the progress that has already been made in the area."

The naming of a housing development after Andy is a small and personal tribute from us, but his legacy is much more important: a real and lasting contribution to his community by being involved at such an early stage in this massive project.

Would you like to name one of our new housing developments? If you've got an interesting story, then contact us on freephone 0800 389 7997 or email us on [regeneration@solihull.gov.uk](mailto:regeneration@solihull.gov.uk).



Leanne Hunt with pictures of her husband Andy who is being honoured by the North Solihull Partnership



## New Kingfisher School Underway

Planning permission has been granted for the new Kingfisher School and work will start on site later this year. The school has been designed by the same architectural practice as Kingshurst Primary School, Architects Design Partnership, with state-of-the-art facilities, child friendly design and eco-friendly resources.

### Your Citizens Advice Bureau has moved

Last year the Citizens Advice Bureau in Chelmsley Wood looked after 3,600 new cases and rescheduled £31.8million worth of debt. That's a lot of people who have been helped!

Continuing this success, the Bureau has moved to new offices at 76 Bosworth Drive, Chelmsley Wood. They re-opened their doors on Monday 15th October 2007, and the opening times for the 'open door' service have remained the same:

**Mondays, Tuesdays and Fridays 9:30am to 2pm**

The Bureau has Specialist Caseworkers in welfare benefits and money advice; you can pop in and talk to them on Mondays, Tuesdays, Wednesdays, Thursdays and Fridays from 9:30 to 4pm.

With this expansion, the Bureau is looking for volunteers to join their team. Full training is given, no formal qualifications are needed, just a desire to make a difference to the local community. Should you wish to volunteer, or require further details, please contact the Bureau on 0121 779 6707.

**Just so you know:** Between 24th and 28th September, residents and local businesses were invited to view the detailed designs for the North Arran Way Village Centre.

The Village Centre will give accesible and convenient services to Kingfisher School, which the plans are centred around. A detailed planning application for the Village Centre is due to be submitted in the new year.

# Schools Programme Update

## – 2 years on

We're now into the second year of the regeneration programme and we are already building new primary schools.

As you can see on page 6, Kingshurst School is only weeks away from completion, and we now have planning permission for Kingfisher School.

Our programme is to build at least one primary school a year. Our commitment is to make sure we get absolutely everything right in the planning stage.

We believe that schools are hugely important to the whole regeneration programme, so the order in which they get built will depend on the progress in other areas, such as the development of the Village Centres. For this reason, we have grouped schools together based on their location. We have given each area three years, during which all the schools in that area will be built. The precise order will be influenced by the timing of the new Village Centre in the area.

**Here is the revised timetable:**

New School	New Completion Date
<ul style="list-style-type: none"> <li>• Kingfisher Primary School - linked to North Arran Way Village Centre.</li> </ul>	2008
<ul style="list-style-type: none"> <li>• St Patrick's Catholic Primary School/St Anne's Catholic Primary School</li> <li>• Bishop Wilson Church of England School - linked to Craig Croft Village Centre.</li> </ul>	By 2010
<ul style="list-style-type: none"> <li>• Hatchford Community School/Bennett's Well Junior and Infant School - linked to the Fordbridge Village Centre.</li> <li>• Coleshill Heath School/Alcott Hall Junior and Infant School</li> <li>• Windy Arbor Junior and Infant School</li> </ul>	By 2013
<ul style="list-style-type: none"> <li>• Yorkswood Primary School</li> <li>• St Anthony's Catholic Primary School/St John the Baptist Catholic Primary School</li> <li>• A new school - linked to the Bacon's End Village Centre</li> </ul>	By 2016

We will continue to talk to parents, teachers and children about their local school to keep them completely updated about what is happening. You will also get the chance to see any plans we have for each school and make your comments.

If you have any questions or would like more information please call our free phone number on **0800 389 7997**, or email us on **[regeneration@solihull.gov.uk](mailto:regeneration@solihull.gov.uk)**



# Who do you talk to?

**Jobs**

**Advice for  
Young Adults**

**Drug Advice  
and Help**

**Money Advice**

## **Pertemps**

Visit them between 9am and 5pm, at  
Smith's Wood School  
Windward Way  
Smith's Wood  
B36 0UE

Or call them on **0121 770 2345**

On education, careers, housing, money,  
health and relationships:

## **Connexions**

Visit them between Monday to Thursday,  
11am to 4pm and Fridays 12noon to 4pm  
289 Bosworth Drive  
Chelmsley Wood  
B37 5DP

Or call them on **0121 770 1861**

For advice on the same topics you can also  
contact your local Youth Service Manager  
on **0121 717 5801**

## **Welcome**

Visit them at  
15 Larch Croft  
Chelmsley Wood

Or call them on **0121 678 4730**  
Or email them  
**enquiries@welcome-solihull.co.uk**

## **Talk to FRANK**

Free confidential drugs information  
and advice, 24 hours a day  
Call free phone **0800 77 66 00**  
Or visit **www.talktofrank.com**

## **Citizens Advice Bureau**

(see the article on page 9)  
Visit them on Mondays, Tuesdays  
and Fridays between 9:30am and  
2pm, at  
76 Bosworth Drive  
Chelmsley Wood

Or call them on **0121 779 6707**

# Talent Search Update

We've now finished our summer talent search, thanks to all of you that supplied your details! The Solihull Times has covered quite a few of your stories, and for those of you that they haven't yet contacted, they will keep your details on file.



Thanks to the search, we've seen a lot of great creative work from local people, Here is a cartoon designed by Marc Baylis, who lives in Fordbridge. Marc got in touch with us and we were so impressed with his enthusiasm and dedication we decided to publish it ourselves:

