

Regenerating North Solihull

December 2007

Your News, Your North Solihull

What's it like finding a new home because where you are now is being demolished?

Resident John Hall tells all.



In this month's newsletter...

PAGE 2

110 marks out of 100

Our Home Maker Team

PAGE 3

Want to start a new business?

Citizens Advice Bureau coffee mornings

PAGE 4 & 5

A very Kingshurst Christmas!

PAGE 6

2nd Phase of Demolitions

PAGE 7

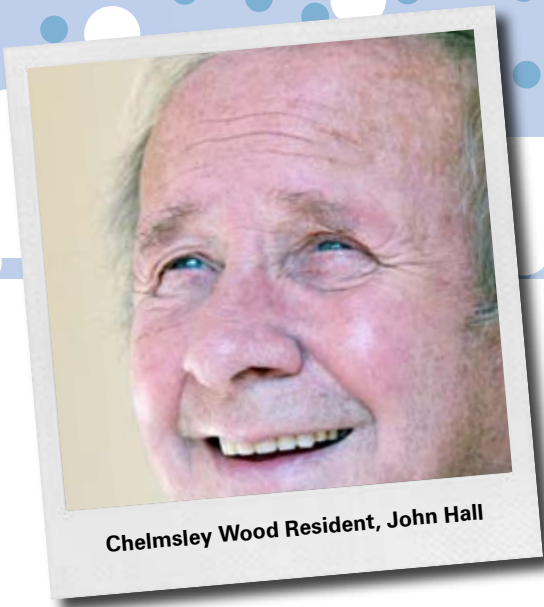
New Chelmsley Wood Library

PAGE 8

Easy as ABC to go green

Champion of the Earth

110 marks out of 100



Chelmsley Wood Resident, John Hall

What's it like finding a new home because where you are now is being demolished? John Hall, from Chelmsley Wood, has lived in the area for 30 years and has already done this. So we sat down for a chat with John and he told us all about his experience:

"Chelmsley Wood is still a great place to live, but there is no doubt it is now in need of some attention" he said, "When I moved here it was as good a place to live as any, but over the years there are parts that have become run down and in need of sorting out."

A Neighbourhood Plan for Craig Croft was agreed in November 2005 after nearly 14 months of consultation with local people. In the plan, John's home was earmarked for demolition and he would need to be re-housed. Our Home Maker team contacted him to explain how it all would work and all the options available including the financial help we can give.

He said "I talked to the Home Maker team for a year before I moved. When I was first contacted my main concern was that I found something suitable that wasn't too far away from my friends and the shops.

"I saw a bungalow in Nineacres Drive that I really fancied. As soon as the Home Maker team confirmed I met the criteria, they pulled out all the stops and before I knew it I was moving in.

Throughout the process John had a single point of contact in David Cooper from the Home Maker team and he couldn't have been happier with the service he received. John added: "David was brilliant from start to finish and was always there to answer any questions I had about the move. If I had to give him marks out of 100, I'd give him 110."

The Home Maker team has now found new homes for more than 170 local residents in the North Arran Way and Craig Croft neighbourhoods.

If you would like more information on the re-housing process then call our free phone number on 0800 389 7997



A big hello from the Home Maker Team!

Our Home Maker Team

The Home Maker team specifically works with residents whose homes have been identified to be demolished. We only know which homes need to be demolished after we have fully consulted you about plans for your area and agreed a timetable for the changes (called a Phasing Plan).

If you are a Solihull Community Housing tenant and your home is due to be demolished you don't need to do anything – our Home Maker team will contact you to talk through your options, and they will help you find another home.

If you own your own home you will be contacted by the Home Purchase Team, who will help you sell your home to North Solihull Partnership and buy another home.

The Home Maker team do not have up to date information about the regeneration programme. So for general enquiries on Regenerating North Solihull you can call us on 0800 389 7997.

Solihull Community Housing is responsible for running the housing service on behalf of Solihull Council. If you want to find out more about Solihull Community Housing and the work they do, you can visit their website:

www.solihullcommunityhousing.org.uk or call them on 0121 717 1515.

Want to start a new business?

Starting your own business is exciting but it can be quite daunting, especially if you don't have the right information or experience. Enterprise for Success is a new scheme that offers free business assistance and mentoring to new business start-ups.

A free business clinic has been running in December and will continue in the New Year. So if you're unsure about where to start, or would like some of your questions answered, then come along and hear it first hand from people who have already set up their own businesses.

For more information or dates for the next clinic, please contact Hannah Reynolds on 07812 189 139.

Citizens Advice Bureau coffee morning

The Chelmsley Wood Citizen's Advice Bureau has been getting a bit of a caffeine fix.

In November it held a coffee morning which was a great chance for people who are thinking of volunteering to drop in, have a look around its new offices and find out more about the volunteering opportunities available.

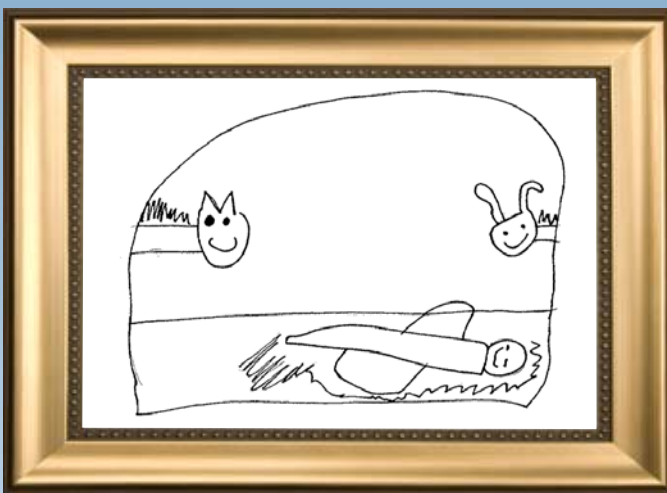
If you are interested in volunteering but were unable to attend then please contact the Bureau on 0121 779 6707 or visit its new offices on 176 Bosworth Drive, Chelmsley Wood.



A very Kingshurst Christmas!

Well done to all pupils of Kingshurst Primary School who entered our Christmas card competition. We had so many fantastic entries it made the judging very difficult, but here are our two runners up:

Congratulations to



Daisey Dearn, Class 4b



Helena Day, Class 4a



And the winner is...



Dulcie May Long, Class 4r

Well done Dulcie and a very merry Christmas from all of the Regeneration Team!

Dulcie has had her card printed which will be used by the North Solihull Partnership and Kingshurst Primary School as their card for this year.

We hope the pupils of Kingshurst Primary School are looking forward to their new start together in their brand new school, which opens for pupils in January. Look out for our next newsletter to see how they are all getting on!

2nd Phase of demolitions

We will soon be able to start work on your new village centres in North Arran Way and Craig Croft.

We are just waiting for final planning permission before we can go ahead.

To make way for new homes and a new Village Centre for each neighbourhood, 91 properties and 30 garages in North Arran Way and Craig Croft are being demolished.

If you would like to talk to one of our team about how the rehousing and demolition process works, then just call our free phone number on 0800 389 7997.

Burtons Farm Park Now Launched!

The launch of a new development of 65 houses and apartments are the first new homes in well over a decade for Smith's Wood. Burton's Farm Park is located off Tamar Drive and will be within walking distance for the new North Arran Way Village Centre.

Burton's Farm Park comprises 16 three bedroom houses and nine four bedroom homes, and a two bedroom coachhouse. There are a wide variety of house designs, covering terraced, semi-detached and detached styles. There are also five apartment buildings, each featuring a selection of one and two bedroom properties, which are perfect for both younger buyers and downsizers.



*Janet Bradbury, Chief Executive of the North Solihull Partnership.
Outside one of the houses set for demolition*



What would you like to see in your new Chelmsley Wood library?

Solihull Council is rebuilding your new Chelmsley Wood library. The new building is due to open in Spring 2009 and work will start on site very soon. So the library meets your needs, the Council would like to know what you would like to see in your new library. Maybe you'd like a quiet reading corner or a bigger local history section, the Council wants your ideas!

So, come along to the customer appreciation week on Thursday 17th, Friday 18th or Saturday 19th January. Held at Chelmsley Wood Library, Stephenson Drive, B37 5TA.

There will be:

- A free bear for all children under 5, who take part in the story time sessions at 10.30am or 1.45 on Thursday 17th January.
- Free refreshments.
- Information stalls.
- Puppet making.
- Face painting.
- Prize draw.

Come along and find out what more your local library could do for you!

Library opening hours:
Thursday 10am to 7pm
Friday and Saturday 10am to 5pm

For more information call Chelmsley Wood Library on 0121 788 4380.



It's as easy as ABC to go green

Everyone in North Solihull is going green since Solihull Council sent everyone an 'A-Z of Recycling' guide.

The guide gives information of how you can dispose of unwanted items without just throwing them in the bin.

From aerosols to unwanted zips, the leaflet not only says what to do with them, but also shows you where you'll find your local recycling centre.

Designed to be quick and easy to use, the guide has been a great success, with 8 out of 10 people saying they had recycled items since receiving the leaflet.

So if you fancy doing your bit for the environment, and you haven't received your copy of the guide, just call Solihull Council on 0121 704 8000 or email wasteandrecycling@solihull.gov.uk



Champion of the Earth

Do you want to promote a clean, green and safe community that your friends and family are proud of? Then you could be just the champion we're looking for!

Solihull Council is looking for 'Environmental Champions' to volunteer to help keep your local area clean and tidy, by:

- Removing graffiti
- Litter picking
- Putting up dog fouling signs
- Helping with horticultural projects
- Reporting problems like abandoned cars or piles of rubbish

or anything else you can think of that will make that little bit of difference to your street!

There is already a team of Environmental Champions who have undertaken valuable work tidying up your streets, but more are needed! So get in touch and get involved.

You can contact Claire Reynolds, at Solihull Council on 0121 704 6534 for more information.

For more ways of making a difference to the world we live in, go on line to www.wearewhatwedo.co.uk

